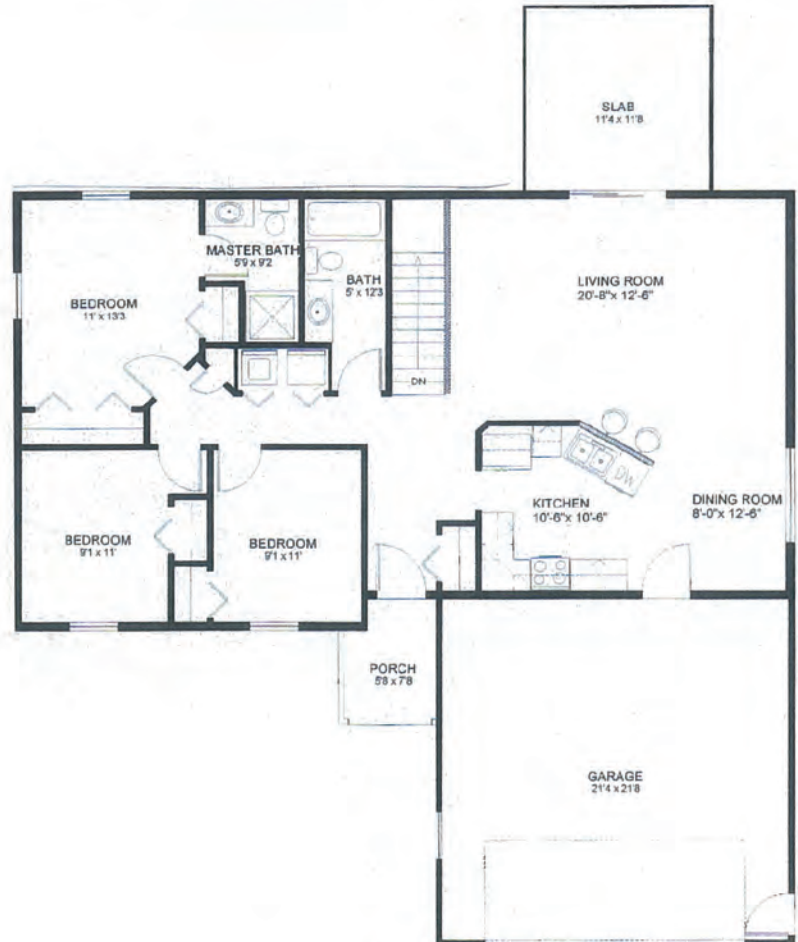




THE RIDGEVILLE



1292 Sq. Ft.



Standard Construction Features

- **Foundation** - 16" x 8" Footings, 8" x 96" Poured Concrete Wall, 4" Concrete Slab with Poly, Drantile Inside & Outside, Sealed Sump Pump
- **Floor System** - 3" Steel Jack Posts, "LP" Micro Lam Beams, Floor Joists as Required, 3/4" T&G OSB Glued & Nailed.
- **Wall System** - 2x6 Studs 16" O.C., Headers as Required, 7/16" OSB Wall Sheeting, House Wrap, 6" Fiberglass Insulation, 4 Mil Vapor Barrier.
- **Roof System** - Engineered Roof Trusses, 15/32" OSB Roof Sheeting w/H-Clips, Roof Felt, GAF Architectural 50 Year Shingle, Roof Edge.
- **Exterior Finish** - "Certainteed" Mainstreet D-4 Vinyl Siding, "Rollex" Aluminum Soffit and Fascia, "Kolbe and Kolbe" Vinyl Windows w/ Low E, Argon Gas Filled Glass, "Therma Tru" Doors w/ Extruded Aluminum Frames, "Wayne Dalton" #9600 Overhead Garage Door w/ "Chamberlain" 1/2 HP Opener.
- **Interior Finish** - Prefinished Flush Oak Hollow Core doors, Prefinished Colonial Base and Casing, "Merillat" Spring Valley Oak Cabinets, "Pionite" Laminate Countertops, Quarry Tile Front Entry, Standard Floor Covering Package, Orange Peel Texture Walls and Ceiling Painted Off White, White Laminate Closet Shelving, Prefinished Oak Window Extension Jambs, "Kwikset" Cameron Locksets, 1/4" Plate Glass Mirrors, Towel Bars, Paper Holder.
- **Plumbing** - Stainless Steel Kitchen Sink, Built In Location for Dishwasher, Garbage Disposal, Drop In Vanity Sink, Tub/Shower Module, Elongate Water Closet, 50 Gallon Gas Water Heater, Floor Drain, Washer & Dryer Hookup, (2) Exterior Hydrants.
- **HVAC** - 95% Efficient Forced Air Gas Furnace, 13 Seer High Efficient Air Conditioning.
- **Electric** - 200 Amp Service, Wiring As Per Code, Standard Light Fixture Package

| | |
|------------------------------------|-----------------------------------|
| Qualified Architectural Draftsman | Excellent Reputation |
| Experienced Carpenters | Properly Insured |
| Quality Building Materials | Attractive & Distinctive Styling |
| Professional Job Site Coordination | Guaranteed Pricing - No Surprises |
| Highest Value For Your Dollar | Over 85 Years Experience |

Tomah Lumber is a name that has been known since 1929 and offers quality and expertise unmatched in the area; the business is owned and operated by Travis Boettcher. Along with Travis, Eric Hall is a member of the Tomah Lumber Team and together Travis and Eric have over 40 years of experience in the building business. Tomah Lumber has built numerous custom homes as well as apartments and commercial buildings in the area. Each project is given the quality and attention to detail they deserve. Talk to any of our satisfied customers and see how easy it is to build your own Tomah Lumber "Quality Custom Stick Built Home."



608.372.2111
www.TomahLumber.com